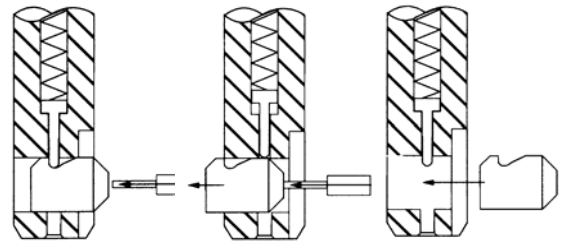


### Chamfer Blade Change Information:

The blade change is quick and easy. There are no tools required and it can be done with the tool in the spindle.

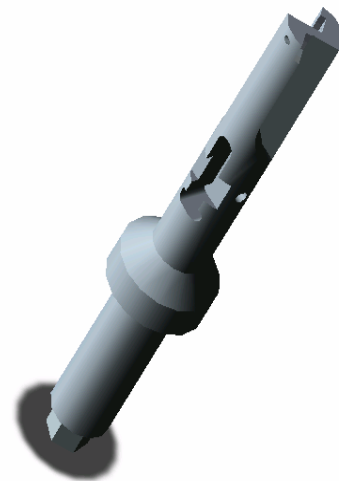
- Remove the blade by simply pushing it past center and out the back of the tool.
- Install the new blade by pushing the back side into the window until it 'snaps.'
- The tool is ready to run.



### Drill Blade Change Information:

The blade change is quick and easy.

- Unscrew and remove the screws holding the spade drill in place.
- Remove the old blade and insert the new blade.
- Insert the screws and tighten back into place.



**NOTE:** If you have a COMBI tool with a countersink insert and need to replace the blade, simply remove the screw, replace the blade with a new one and tighten the screw back into place.