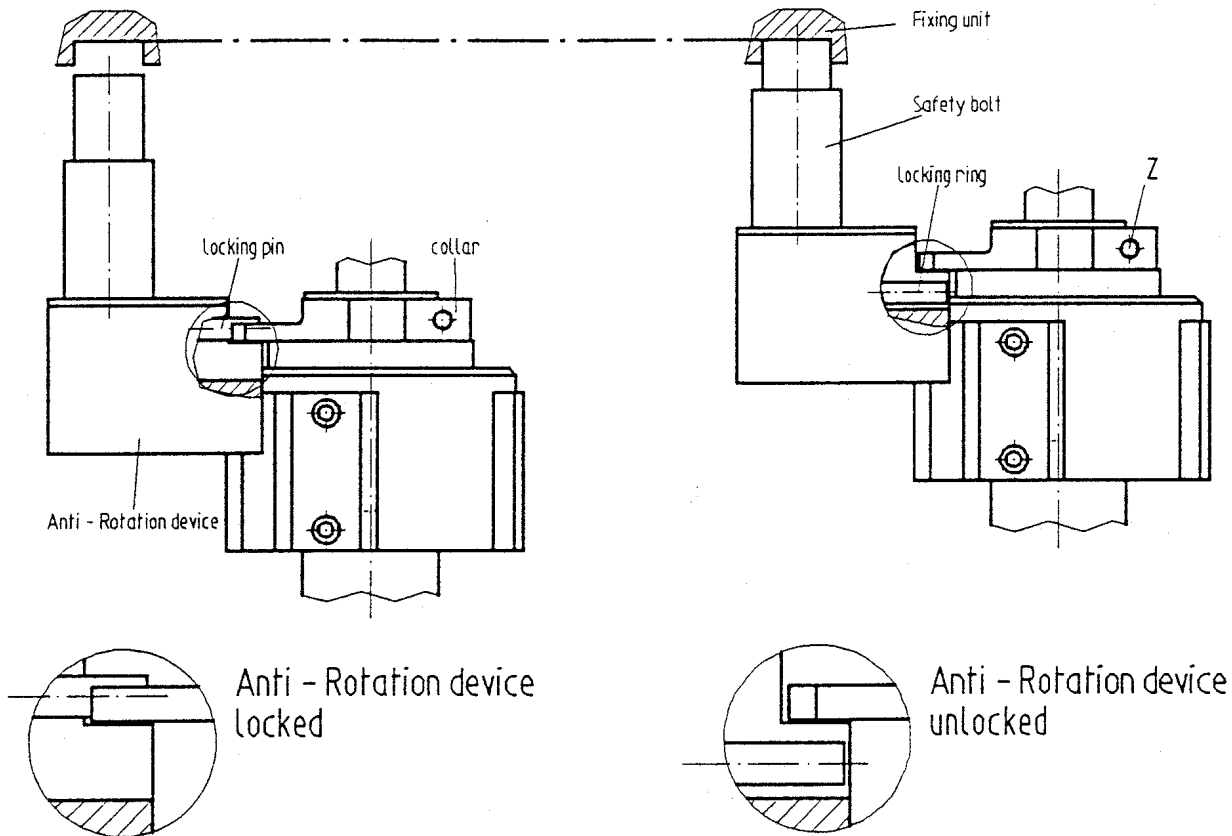


## 2.3. Adjustment of the CNC anti-rotation device on the machine



Loosen collar screw "Z".

Rotate the collar so that the locking pin (on the anti-rotation device) lines up and will fall between the forks of the collar. Put tool into the machine manually. While doing this, position the anti-rotation device with the loosened collar so that the safety bolt engages in the counterpart of the machine (fixing unit).

Tighten collar screw "Z".

In case that the tool change position is not yet completely right the collar screw "Z" can be loosened again and the collar can be re-positioned correctly.

GH01 93	Tool Application	GH-Z 2-03
---------	------------------	-----------