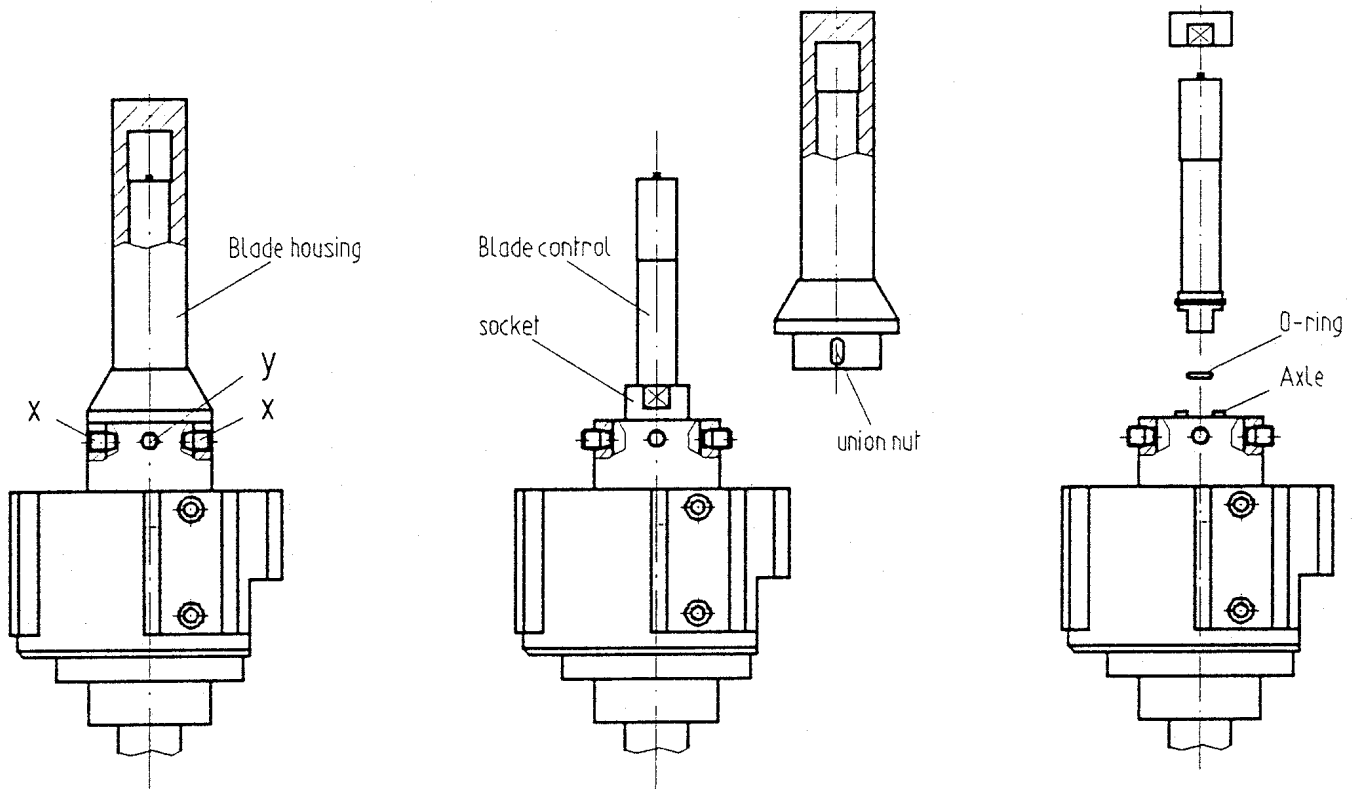


3.2. Dismantling of blade housing and blade control



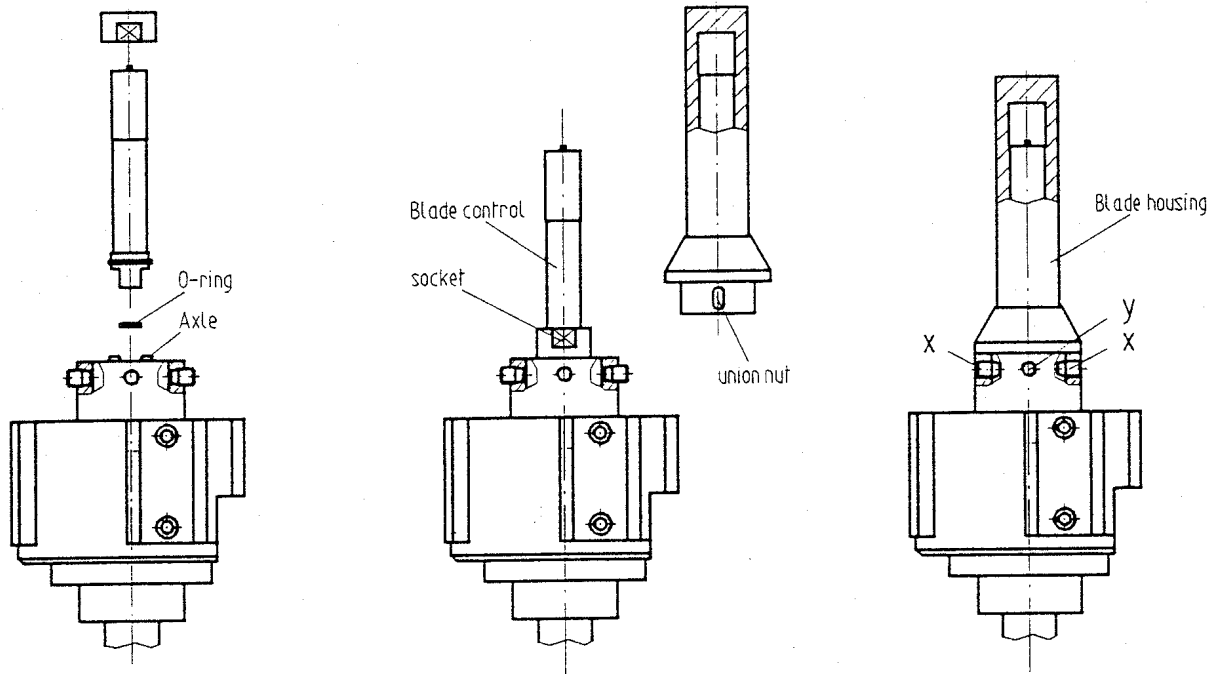
Loosen clamping screws "X" and stop screw "Y" until the blade housing can be removed from the tool head.

Caution: The cutting blades are no longer fastened in the window of the blade housing and can easily be pushed out.

The blade control is fastened to the tool head by means of a socket ("union nut"). In order to dismantle the tool head this union nut has to be screwed off.

Attention: Tools with through tool coolant supply have an O-ring placed between blade control and the axle of the tool head.

3.3. Assembly of blade housing and blade control



Attention: In case of exchanging blade housing, blade control and blades it has to be taken into consideration that parts of different applications must not be used together. From the assembly drawing (piece list) delivered with the tool you will see which parts belong together.

Set the blade control into the slot of the axle of the tool head and fasten it with the socket.

Pay attention that the blade control is not mounted in a sloping position onto the tool head.

Tools with through tool coolant supply must have an O-ring.

Please note: The blade control of special tools with blades of different length per set is specially marked. The notch of the blade control has to be aligned with the notch of the axle of the tool head.

When mounting the blade housing it first has to be positioned on the tool head with the aid of the stop screw. The stop screw "Y" has to engage into the elongated hole at the blade housing. Do not fasten stop screw.

Screw in the clamping screws "X", but do not fasten.

Insert blades as per "3.1 Changing blades".